



BOSCH

LET'S GET EN
STARTED

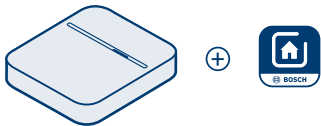


Motion Detector

Quick start guide

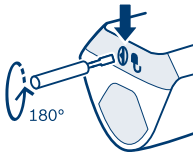


LET'S GET STARTED



1. Install the Smart Home Controller

If not yet installed: Download the Bosch Smart Home App and install the Bosch Smart Home Controller.



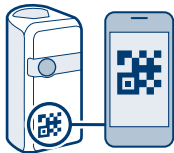
2. Separating housing and fixing bracket

To do so, use a screwdriver to twist the turn lock on the underside of the Motion Detector counterclockwise by 180°, and simultaneously pull away the housing from the mounting bracket.



3. Launch the Smart Home App

Launch the Bosch Smart Home App and select “Add device”. Follow the instructions in the app.



4. Scan the QR code

The app will prompt you to scan the QR code on the product. The QR code is on the back side of the housing.



Fixing instructions

- ▶ There must not be any windows in the detection area of the Motion Detector.
- ▶ Avoid direct or indirect sunlight in the detection area of the Motion Detector.
- ▶ Do not block the detection area with objects.
- ▶ Do not install the Motion Detector near rotating objects (e.g. fans) or independently moving objects.
- ▶ Do not install the Motion Detector near sources of heat or cold.
- ▶ Do not place any objects on which pets can climb in the detection area.
- ▶ Place the Motion Detector in the part of the room which is most frequently walked through (e.g. near the door).



Please refer to our website for an explanatory video on how to install the Bosch Smart Home Motion Detector at: www.bosch-smarthome.com/installation

Technical data

Device type name	Bosch Smart Home Motion Detector RFPR-ZB-SH-EU
Batteries	CR123A
Battery life	Up to 5 years ¹⁾ (with use of one battery)
Radio frequency	2.4 GHz
Max. transmission power	10 dBm
Protocol	Based on ZigBee HA1.1 with extended encryption technology
Radio range in free-field conditions	> 50 m
Protection class	IP20

¹⁾5 years, based on typical storage temperature (-10 to 55°C), ambient temperature, 160 motion detections/day and 2 software renewals of the device/year. High temperatures over 50 °C shorten the lifetime. Optionally a second battery (not included) may be used. The battery lifetime doubles accordingly.

Ambient temperature	0 °C to +50 °C
Humidity (non-condensing)	0 % to 93 %
Software class	Class A
Housing dimensions (W × H × D)	60 mm × 108 mm × 42 mm
Weight (including battery compartment)	114 g
Detection range	90° and 12 m
Lens	7 × 11
Recommended mounting height	2.20 m – 2.70 m

Safety instructions

- ▶ Installation must be carried out in accordance with the applicable regulations. Failure to comply with the instructions may result in damage to property and/or personal injury.
- ▶ Take the batteries out of the device if it is not used for a prolonged period of time.
- ▶ The enclosed batteries are not suitable for charging.
- ▶ Do not throw batteries into fire! Do not expose batteries to excessive heat. Do not short-circuit batteries. Danger of explosion!
- ▶ Do not modify the product in any way. Any other use is considered unintended use. No liability is accepted for any consequential damage.
- ▶ The product may only be used indoors with Bosch Smart Home original components and recommended partner products.
- ▶ Avoid dust, moisture, vibrations, mechanical stress, cold, and constant exposure to sunlight or heat.
- ▶ When choosing a fixing location and when drilling, pay attention to potential electrical lines and/or supply lines that could be behind the wall.
- ▶ The device is not a toy. Do not let children play with it. Do not leave packaging material lying around carelessly. Plastic film and small parts can become a dangerous toy for children.
- ▶ When controlling a device remotely or using automated control, external circumstances (such as the radio connection to the Smart Home Controller being interrupted) mean it cannot always be guaranteed that commands will actually be carried out or that the correct status of the device will be displayed in the app and on other Smart

Home display devices (e.g. a Twist). This may result in damage to property and/or injury.

Therefore:

- Please ensure as far as possible that no-one is at risk during remote operation or automated control.
- Please exercise particular caution when setting up or adjusting remote or automated control and regularly check the desired functionality.

Declaration of conformity

Hereby, Robert Bosch Smart Home GmbH declares that the radio equipment type Bosch Smart Home Motion Detector complies with Directive 2014/53/EU. The full text of the EU declaration of conformity is available at the following internet address:

www.bosch-smarthome.com/conformity



Environmental protection and disposal

Electrical and electronic equipment that is no longer usable and defective or used batteries must be separated from other waste and recycled in an environmentally friendly manner (European Directive on waste electrical and electronic equipment). To dispose of electrical and electronic equipment or batteries, use your country-specific return and collection systems.



Maintenance and care

The product is maintenance-free. Repairs should only be performed by qualified persons. Clean the product with a soft clean dry and lint-free cloth. Do not use cleaning agents containing solvents. Incorrect handling (see notes on intended use) or non-observance of hazard warnings may compromise the protection afforded by the device.

Service instructions

- ▶ If you have any questions, please contact our freephone service hotline.
- ▶ You can find more detailed information on operating, installation and maintaining the product online at: **www.bosch-smarthome.com/service**



Robert Bosch Smart Home GmbH
Schockenriedstraße 17
70565 Stuttgart-Vaihingen



0808 1010 151 (United Kingdom)*
1800 200 724 (Ireland)*
Mon-Fri 7:00 am – 8:00 pm
Sat/Sun 8:00 am – 6:00 pm

* Freephone service



service@bosch-smarthome.com